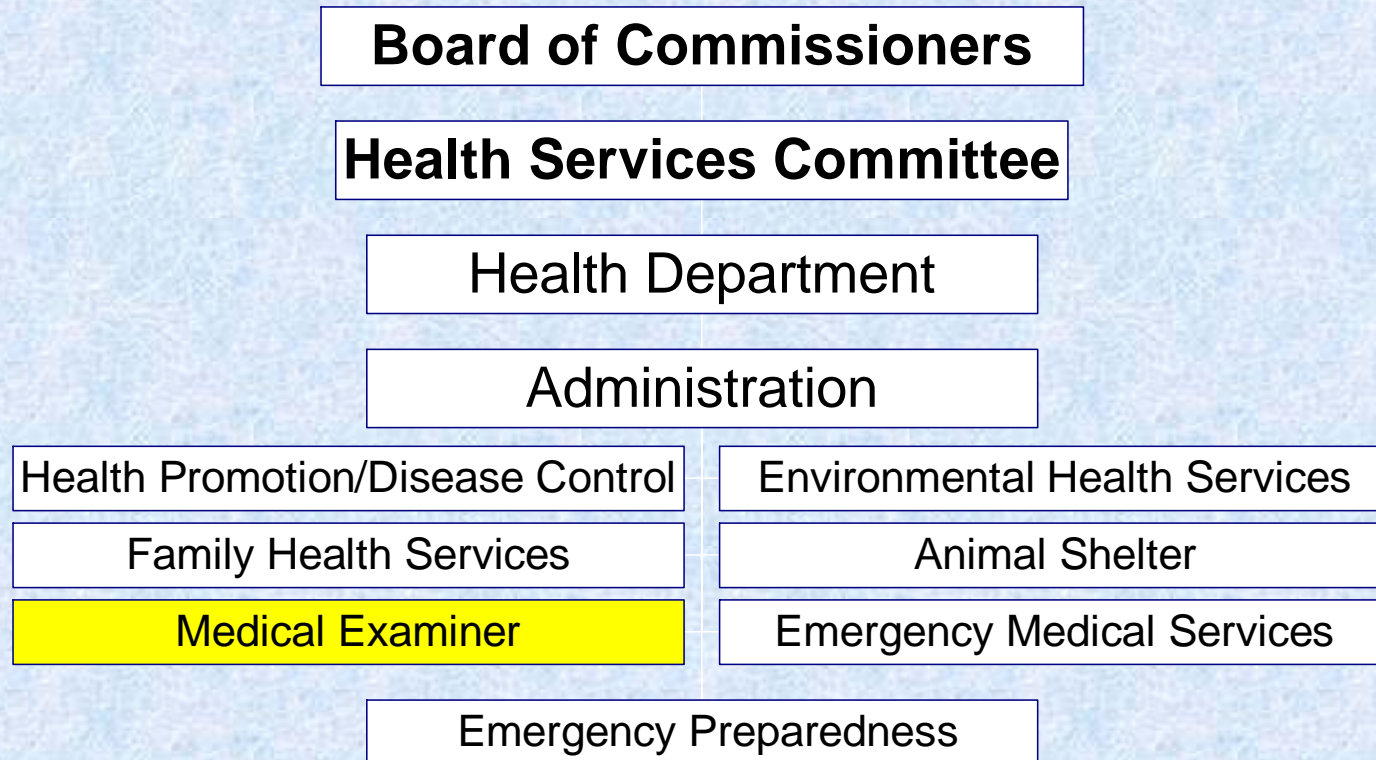


Organizational Chart



Macomb County Health Department

Office of the Medical Examiner



Office of the Medical Examiner

- ◆ Operates administratively under the Macomb County Health Department.
- ◆ Office of the Medical Examiner investigates the cause and manner of deaths involving violence, accidents and deaths not attended by a physician.
- ◆ Investigations include:
 - Examination of death scene
 - An autopsy when necessary
 - The certification of death certificates
- ◆ Investigations provide information relative to criminal prosecution in appropriate cases, settlement of estates and public health statistics on communicable disease and other mortality data.

Statutory Authority:

- Public Act 181 of 1953

