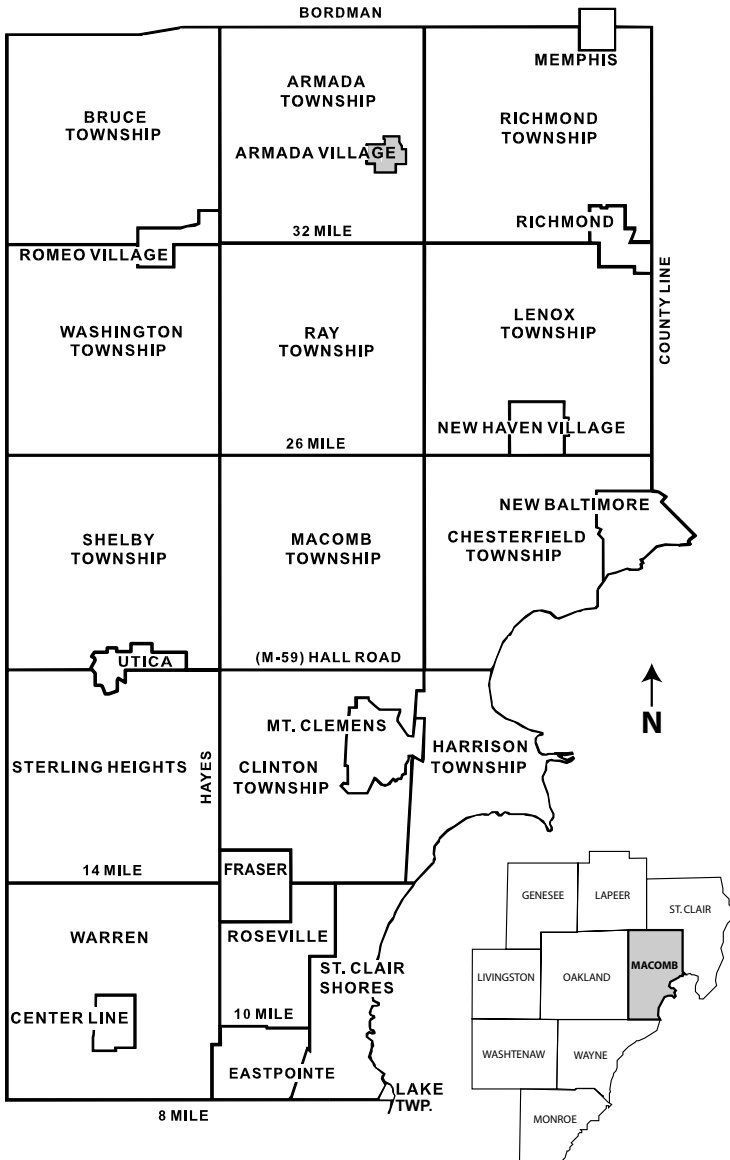


Village of Armada

Macomb County, Michigan



Located within Armada Township in north-central Macomb County, the Village of Armada lies midway between the Village of Romeo to the west and the City of Richmond to the east. Surrounded by some of the richest agricultural land in the County, the Village was incorporated in 1869 as an agricultural shipping center.

For the past fifty years the Village of Armada has experienced slow but continuous growth and has remained a service center to the surrounding agricultural area. Each year the 1,573 village residents host the Armada Fair the second largest fair of its kind in the State.

The Village of Armada is characterized by single-family residences, community parks and a central business district reminiscent of many small rural towns. Upon completion of the Macomb Orchard Trail, residents will have an invaluable recreation source that will connect the Village with the rest of the County and region.

The Village is connected to the urbanized portions of the County by Armada Ridge Road (Main), North Avenue (Fulton) and M-53 to the west.



Community Contacts

General Number (586) 784-9151
74274 Burk Street
Armada, MI 48005

**Romeo - Washington
Chamber of Commerce**
(586) 752-3266
www.rwchamber.com

Land Size - 2000
0.7 Square Miles

Median Household Income (2000)
\$61,700

2002 Tax Rate: Average Total Homestead:
\$25.65 per \$1000 State Equalized Value

Average Total Nonhomestead
\$16.29 per \$1000 State Equalized Value

Source: 2002 Apportionment Report, Macomb County Equalization

Culture & Recreation

Armada Fair - **August**
Applefest - **October**
Halloween Parade - **October**
Hollydays - **December**
Historic Downtown
Armada Creative Art Gallery

Economic Incentives

Tax Abatement

Major Roadways

Armada Ridge Road (Main),
North Avenue (Fulton), and M-53

Rail Lines

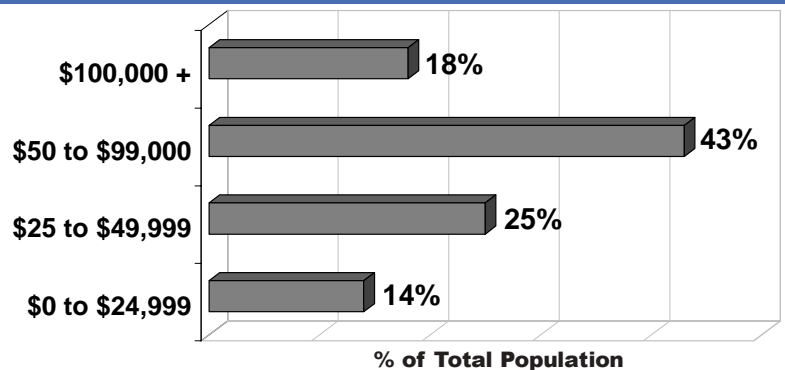
Conrail to the southwest and Grand
Trunk to the southeast

Educational Facilities In Macomb County

Baker College
Dorsey Business School
Macomb Community College (MCC)
University Center (MCC)
Central Michigan University
Eastern Michigan University
Michigan Technological University
Oakland University
University of Detroit Mercy
Walsh College
Wayne State University

NO DATA AVAILABLE

Household Income - 2000



Source: U.S. Census, 2000

Employment - 2000

Industrial Class	1990	2000	% Change
Agricultural, Mining, and Natural Resources	2%	3%	1%
Finance, Insurance, and Real Estate	2%	1%	-1%
Manufacturing	15%	21%	6%
Public Administration	3%	5%	2%
Retail Trade	n/a	n/a	
Services	52%	48%	-4%
Transportation, Communications, and Utility	0%	0%	0%
Wholesale Trade	n/a	n/a	
Total Employment	985	1,148	

% Based on 100% of Total Employment

Source: SEMCOG, Employment by Industrial Class, 2000

Top Employers - 2003

Rank	Company Name	#Emp
1	Armada Rubber Mfg. Co.	70
2	Fair Acres Nursing Home Inc.	56
3	Armada Grain Co. Inc.	21
4	Park Electric Co.	17
5	Paterek Mold & Engineering Inc.	15
5	TRS Industries Inc.	15
6	Quality Fabrications Inc.	10
7	Bolle Metal Fabricating Inc.	8
8	Delecke Welding Inc.	7
9	Armada Printwear Inc.	6
9	Great Lakes Media Inc.	6

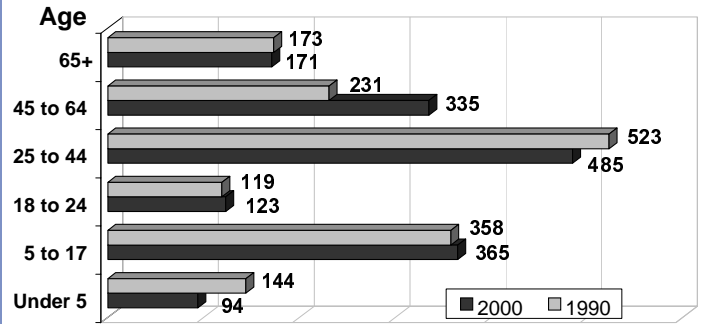
Source: Harris 2003 Michigan Industrial Directory

Land Use - 2003

Land Use Type	Acres	%
Single-Family	211	45%
Multiple-Family	2	0%
Commercial-Office	21	5%
Industrial	20	4%
Transportation, Communication, and Utility	0	0%
Extractive	0	0%
Water	0	0%
Institutional	58	12%
Recreation	0	0%
Vacant (Cultivated, Grassland, and Shrub)	100	21%
Woodland and Wetland	24	5%
Under Development	30	6%
Total Acres	466	

Source: SEMCOG Land Use / Land Coverage for Macomb County, 2003

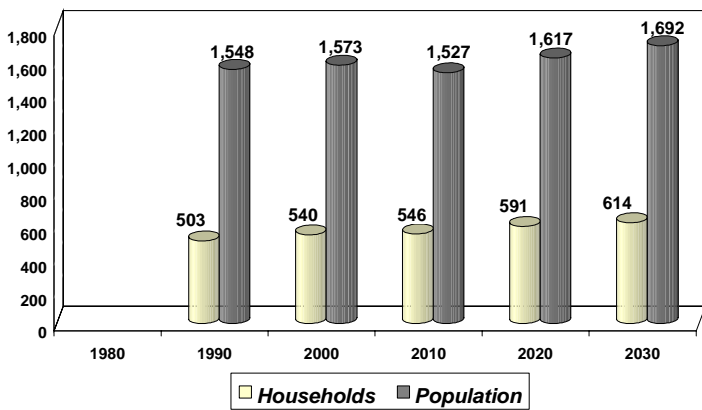
Population by Age



2000 Total Population 1,573

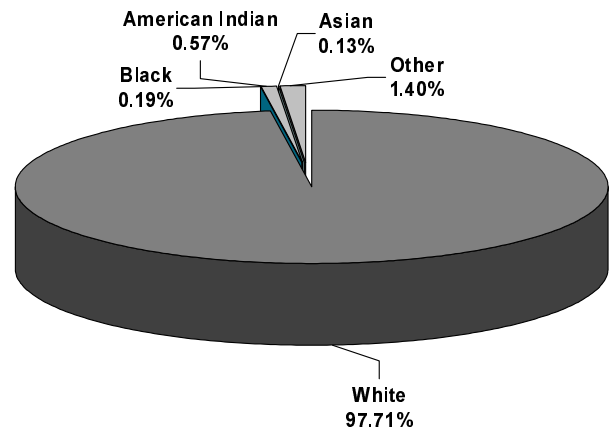
Source: U.S. Census, 2000

Population & Household Projections



Source: SEMCOG, Regional Development Forecast, 2000

Population by Race - 2000



Source: U.S. Census, 2000

Utilities

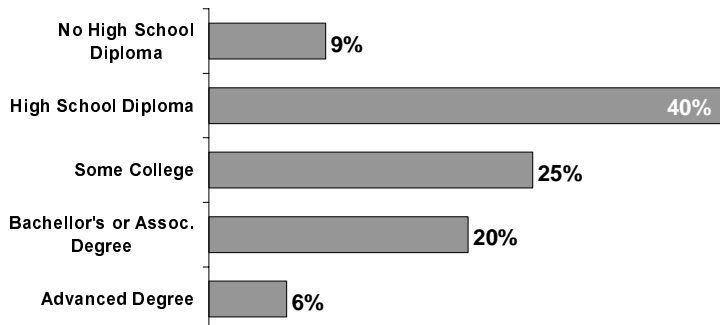
Electric	Detroit Edison	1-800-477-4747
Gas	Consumers Power	1-800-477-5050
Phone	SBC	1-800-244-4444
Water	Clinton Township	1-586-784-8553
Sewer	Clinton Township	1-586-784-9151
Cable/High Speed Internet	Comcast	1-800-427-7662

Education

School Districts:
Armada (586) 784-4511

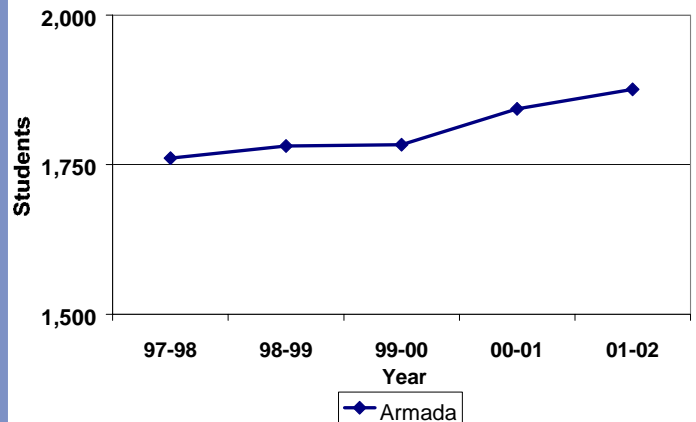
Educational Attainment - 2000

(People Over 25 Years of Age)



Source: U.S. Census, 2000

School District Enrollment, K-12



Source: Michigan School Report, 1999 & 2002

**The
Macomb County
Board of
Commissioners**



Nancy M. White
Chair

Peter J. Lund
Vice-Chairman

Joan Flynn
Sergeant-at-Arms

- Danny Sypniewski
- Marvin E. Sauger
- Phillip A. DiMaria
- Mike Walsh
- Susan L. Doherty
- Sue Rocca
- Diana J. Kolakowski
- Robert Mijac
- Philis DeSaele
- Ed Szczepanski
- Don Brown
- Kurt S. Kramer
- Keith Rengert
- William J. Revoir
- Bobby L. Hill
- Michael C. Sessa
- James M. Perna
- Leonard Haggerty
- Betty M. Slinde
- Roland R. Frascchetti
- Peggy A. Kennard
- Kathy D. Vosburg
- Nicholyn A. Brandenburg

**The
Macomb County
Planning Commission**

Ann E. Klein
Chairperson

Dan G. Dirks
Vice-Chairman

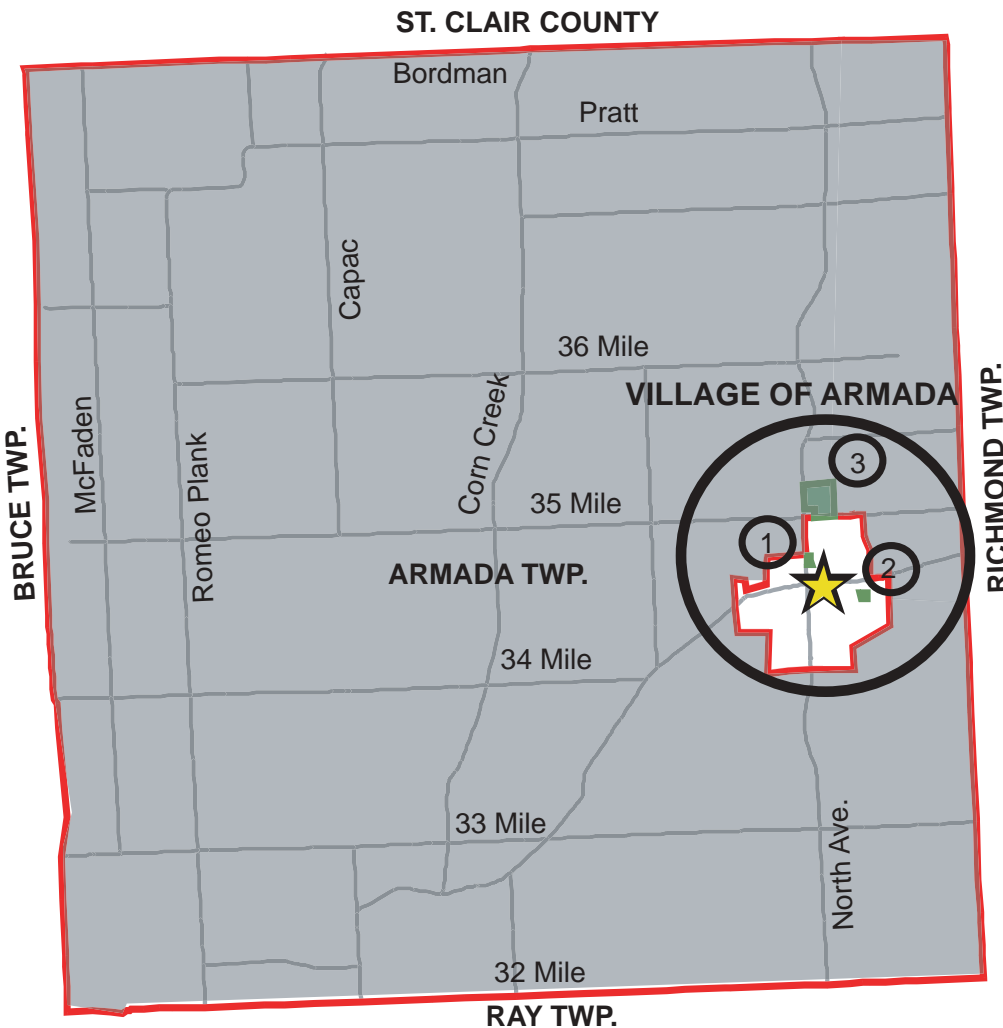
Bernard B. Calka
Secretary

- Louis J. Burdi
- Elmer J. Kuss
- Dominic LaRosa
- Deborah S. Obrecht
- Betty Slinde
- Joseph J. Strizic

**The Department of
Planning & Economic
Development**

Stephen N. Cassin, AICP
Executive Director

Donald Morandini
Deputy Director



Municipal Offices
 Hospital
 Emergency Care
 Parks

Source: Macomb County GIS, 2003

Parks

<u>PARKS</u>	<u>ACRES</u>
(1) Armada Village Park	0.5
(2) Dorothy Moss Memorial Park	0.25
(3) Armada Township Park	24



This was prepared by:
The Macomb County Department of Planning & Economic Development
 1 S. Main St., 7th Floor, Mt. Clemens, MI 48043
 Phone: (586) 469.5285 Fax: (586) 469.6787
www.macombcountymi.gov

