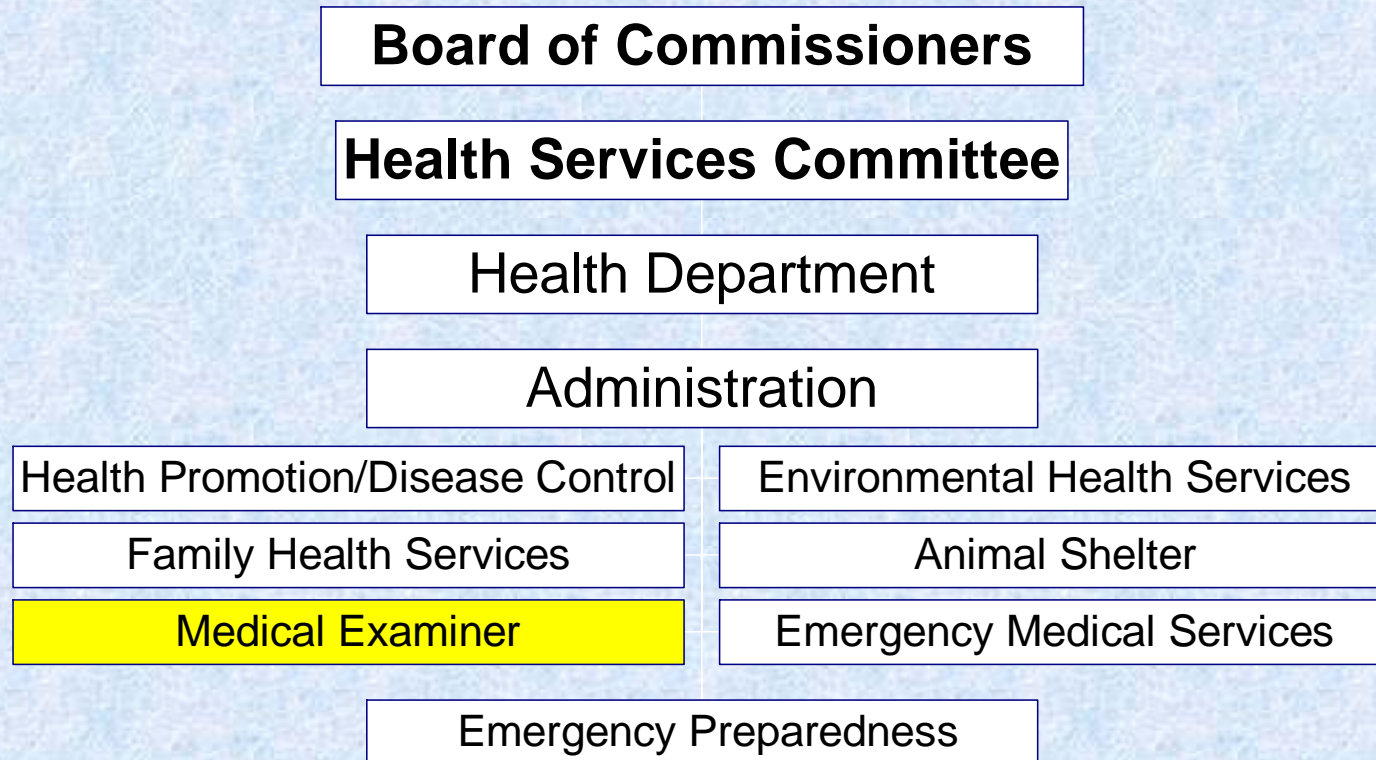


# Organizational Chart



# Macomb County Health Department

## Office of the Medical Examiner



# Office of the Medical Examiner

- ◆ Operates administratively under the Macomb County Health Department.
- ◆ Office of the Medical Examiner investigates the cause and manner of deaths involving violence, accidents and deaths not attended by a physician.
- ◆ Investigations include:
  - Examination of death scene
  - An autopsy when necessary
  - The certification of death certificates
- ◆ Investigations provide information relative to criminal prosecution in appropriate cases, settlement of estates and public health statistics on communicable disease and other mortality data.

## **Statutory Authority:**

- Public Act 181 of 1953

